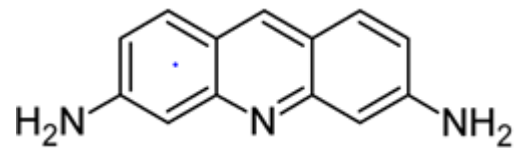


Product Specification

PRODUCT Proflavine Hemisulphate BP1968

CAS [1811-28-5]

H₂SO₄·2H₂O



CHARACTERISTICS An orange to red, crystalline powder, odourless and bitter tasting. Hygroscopic. Soluble at 20°C in 300 parts of water and in 35 parts of glycerol; very slightly soluble in alcohol (95%); insoluble in chloroform and in solvent ether.

TEST	SPECIFICATION
Content	98.0% (anhydrous substance)
Identification	Complies with BP1968 tests
Acidity or alkalinity	pH of saturated solution is 6.0 to 8.0
Certain other acridine derivatives	Complies with BP1968 tests
Water	3.0% to 7.0%
Sulphated ash	Maximum 0.5%

STORAGE Should be stored in a well-closed, light resistant container in a cool, dry place.

THIS PRODUCT COMPLIES WITH THE SPECIFICATION OF BP1968



Proflavine Hemisulphate BP1968