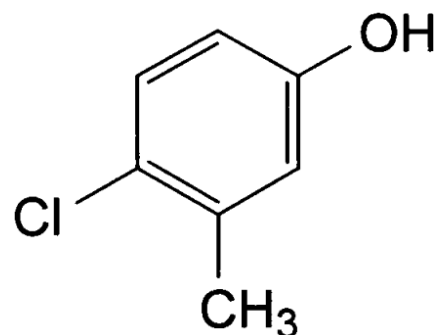


Product Specification

PRODUCT Chlorocresol EP/BP

CAS no. [59-50-7]
C₇H₇ClO
DRUG CATEGORY Antiseptic, Preservative



CHARACTERISTICS A white crystalline powder or colourless or almost colourless crystals, slightly soluble in water, very soluble in alcohol, freely soluble in ether and in fatty oils. It dissolves in solutions of alkali hydroxides.

TEST	SPECIFICATION
Content	98.0% - 101.0% of C ₇ H ₇ ClO
Identification	Complies with EP/BP tests
Melting Point	64 ⁰ – 67 ⁰ C
Related substances	Any single impurity Maximum 0.1% Total impurities Maximum 1.0%
Acidity	Not more than 0.2ml of 0.01M NaOH is required to produce a pure yellow colour
Appearance of Solution	The solution is clear and not more intensely coloured than reference solution BY ₆
Non-volatile matter	Not more than 0.1%

STORAGE Should be kept in a well-closed container, protected from light.



HAZARD PICTOGRAMS

PRODUCT NAMED ABOVE COMPLIES WITH THE SPECIFICATION OF THE EP/BP.

