

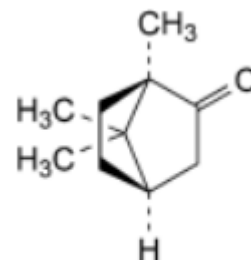
# Product Specification

## PRODUCT Camphor Racemic EP/BP

CAS [76-22-2]

C<sub>10</sub>H<sub>16</sub>O

SYNONYMS Bornan-2-One; 2-Camphanone; 2-Bornanone.



CHARACTERISTICS White or almost white, crystalline powder or friable, crystalline masses, highly volatile even at room temperature.  
Slightly soluble in water, very soluble in ethanol (96%) and in light petroleum, freely soluble in fatty oils, very slightly soluble in glycerol.

TEST	SPECIFICATION
Identification	Complies with EP/BP tests
Melting point	172°C – 180°C
Appearance of solution	Solution S is clear and colourless
Specific optical rotation	-0.15 <sup>0</sup> to + 0.15 <sup>0</sup>
Related substances	Any impurity: Maximum 2.0% Total impurities: Maximum 4.0%
Halogens	Maximum 100 ppm
Water	Complies with EP/BP test: the solution is clear.
Residue on evaporation	Maximum 0.05%

STORAGE Should be stored in a well-closed container in a cool, dry place.

**THIS PRODUCT COMPLIES WITH THE SPECIFICATION OF THE EP/BP**

